

The efficiency of natural resources put at the heart of tourism policy making in the Mediterranean

INCIRCLE IN A NUTSHELL

MAIN INFORMATION

Funding Programme

Interreg MED Programme

Duration

November 2019 – June 2022 (32 months)

Partner countries

Albania, Cyprus, Greece, Italy, Malta, Spain



MAIN AIM

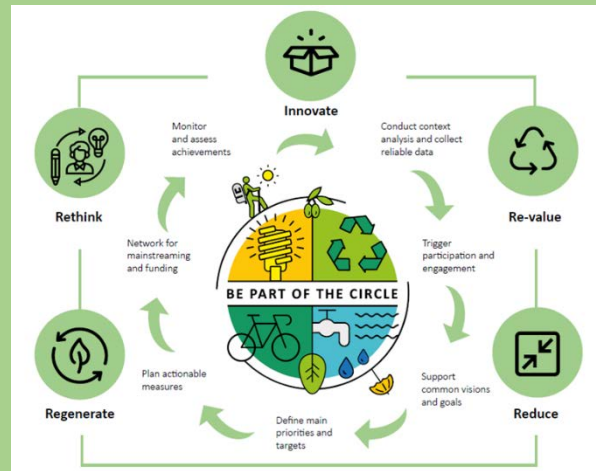
Enhance Mediterranean tourist destinations by applying circular economy principles

Reduce	Regenerate	Rethink	Innovate	Revalue
to tourism policy-making areas				
<p>ENERGY EFFICIENCY AND RES</p> <ul style="list-style-type: none"> • Energy demand management • Optimisation of energy use • Diversification of energy supply sources • Production of renewable energy systems 	<p>WASTE MANAGEMENT</p> <ul style="list-style-type: none"> • Reduction of waste generation at source • Optimisation of waste separation • Reduction of landfilling • Recovery of material and energy 	<p>WATER MANAGEMENT</p> <ul style="list-style-type: none"> • Water demand management • Optimisation of water use • Conservation and regeneration of water supply sources • Wastewater reclamation and alternative water production 	<p>SUSTAINABLE MOBILITY</p> <ul style="list-style-type: none"> • Development of sustainable transport solutions and of supporting infrastructure • Development of modes of collective transportations systems 	

INCIRCLE EXPERIENCE

HOW INCIRCLE WORKED AND WHAT IT DID ACHIEVE

A **7-step methodology** was developed and tested in **11 MED territories**, giving birth to **11 circular tourism assessments** and **11 regional/national strategies**. More than **300 tourism stakeholders** were engaged in such tasks, actively contributing to the design of **259 concrete measures** to support the circular tourism change in the Mediterranean.



INCIRCLE LEGACY

How to lead the change towards a circular tourism in the Mediterranean

INCIRCLE clearly points out the main barriers and drivers of the circular tourism shift along with a firm set of recommendations that need to be endorsed and adopted by decision makers to let the change occur.



Improve data collection and monitoring for more efficient decision making

Set up a circular tourism governance structure in targeted territories.

Develop a 360-degree intervention to drive the transition.

Commit to lead by example.

INCIRCLE TOOLS



INCIRCLE replication toolkit



INCIRCLE self-assessment tool



INCIRCLE policy brief