

BRIDGE
of **MINDS**

LOGO



ZGHARTA REGION

STORIES ARE A DESTINATION



ZGHARTA REGION

STORIES ARE A DESTINATION

COLORS



ZGHARTA REGION

STORIES ARE A DESTINATION

C 36 M 34 Y 40 K 1
A89D93

C 65 M 10 Y 81 K 0
63AD63

C 71 M 1 Y 100 K 0
50B648

C 26 M 0 Y 90 K 0
C8E33E

C 74 M 15 Y 25 K 0
2DA6B9

C 76 M 62 Y 0 K 0
4C69BE

C 2 M 21 Y 36 K 0
F6CDA5

C 2 M 79 Y 100 K 0
ED5A0A

C 100 M 100 Y 100 K 100
000000

TYPOGRAPH

Main Font

LAQUATSA

A B C D E F G H I J K L M N O P Q R S T U V W X Y Z
A B C D E F G H I J K L M N O P Q R S T U V W X Y Z

Secondary Font

HILLSTOWNSANSCLEAN

A B C D E F G H I J K L M N O P Q R S T U V W X Y Z

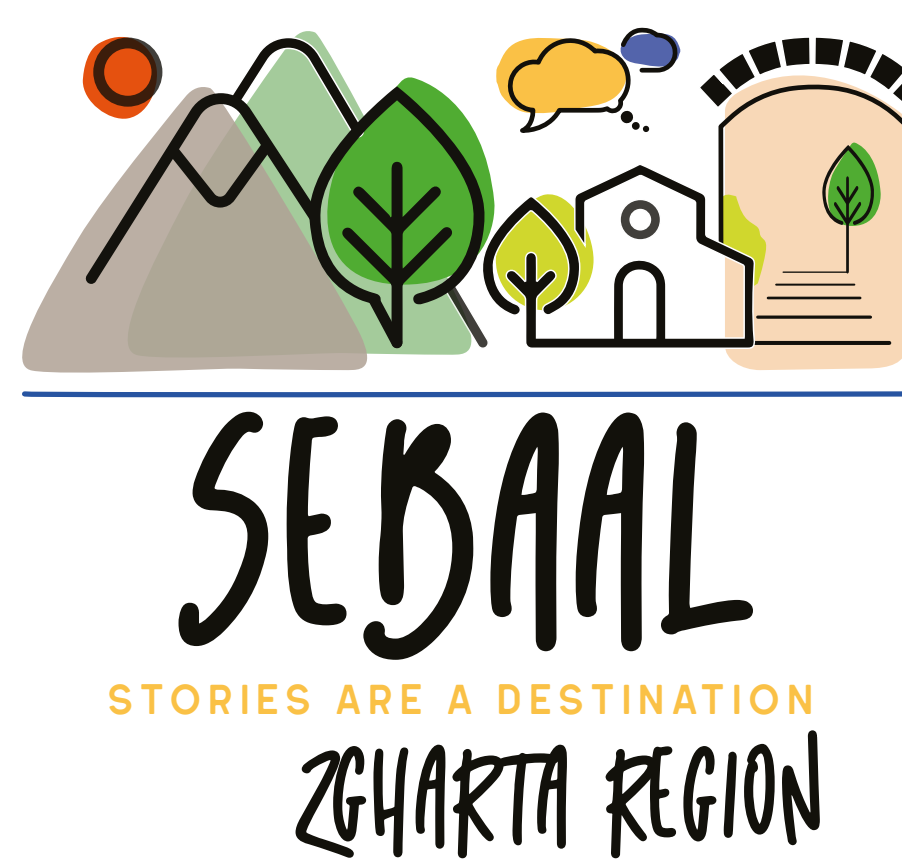
Third Font

Futura Medium

A B C D E F G H I J K L M N O P Q R S T U V W X Y Z
a b c d e f g h i j k l m n o p q r s t u v w x y z

LOGOS FOR DIFFERENT TYPEFACES AND ARABIC

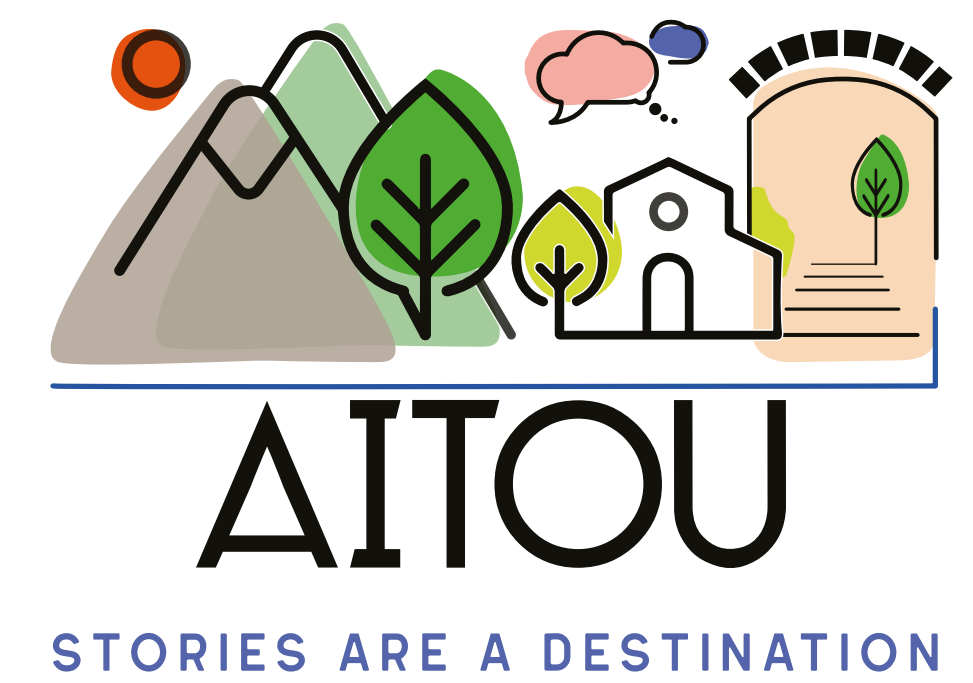
OPTION 1



OPTION 2



OPTION 3



DIFFERENT SLOGAN TYPEFACES



LOGO B AND W



ZGHARTA REGION

STORIES ARE A DESTINATION



ZGHARTA REGION

STORIES ARE A DESTINATION

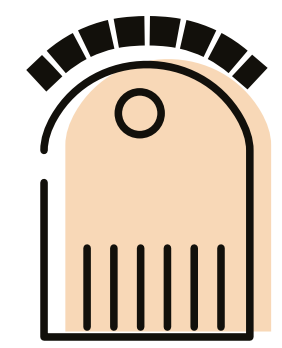
ILLUSTRATION STYLE



MAP ICONS



WILD TREES



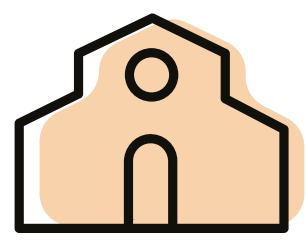
MUSEUM



SEASONAL RIVER



FRUITFUL TREES



CHURCH / MOSQUE



RUNNING RIVER



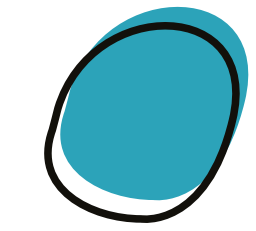
CAMPING LOCATION



RESTAURANT



HIKING LOCATION



LAKE

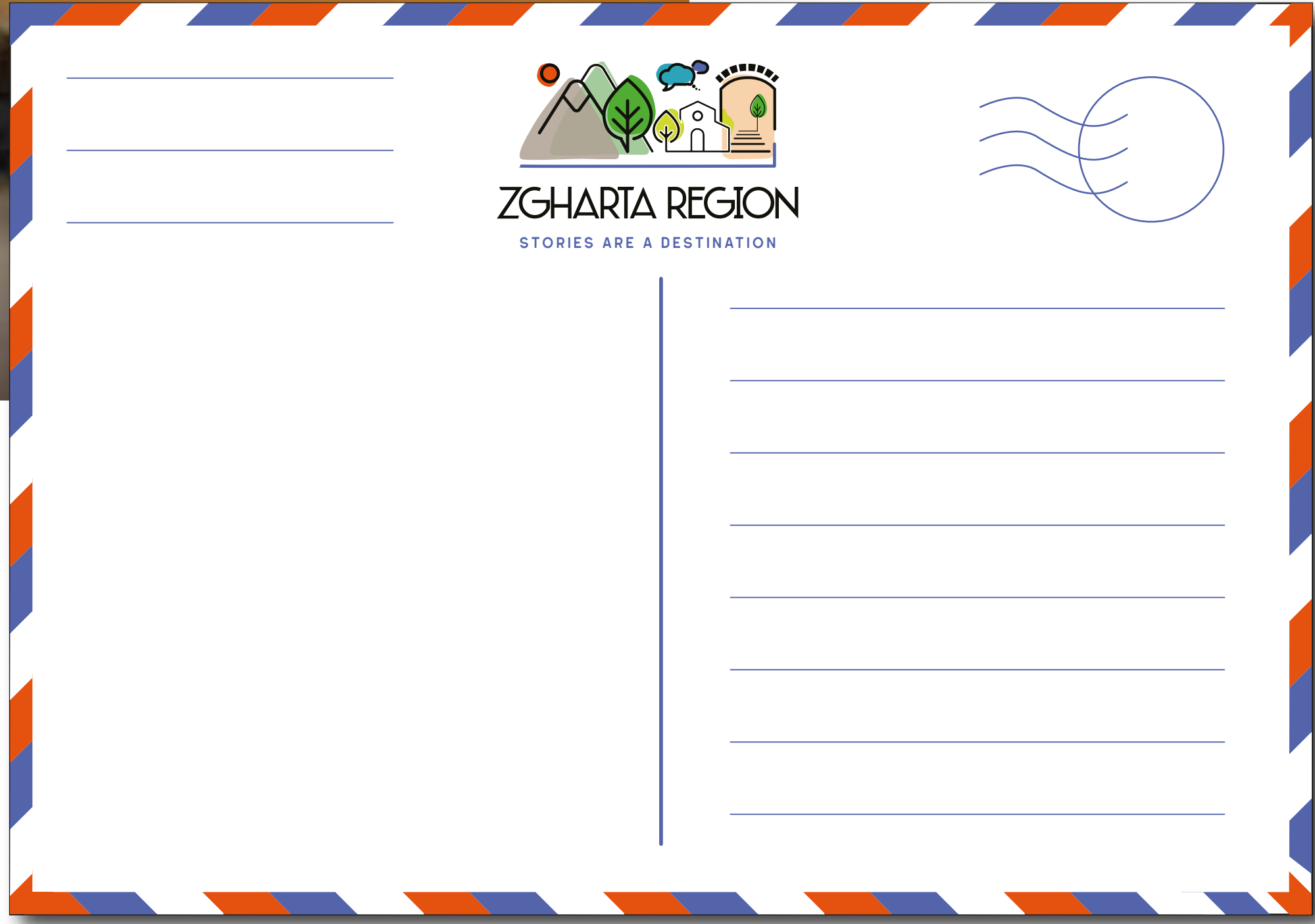
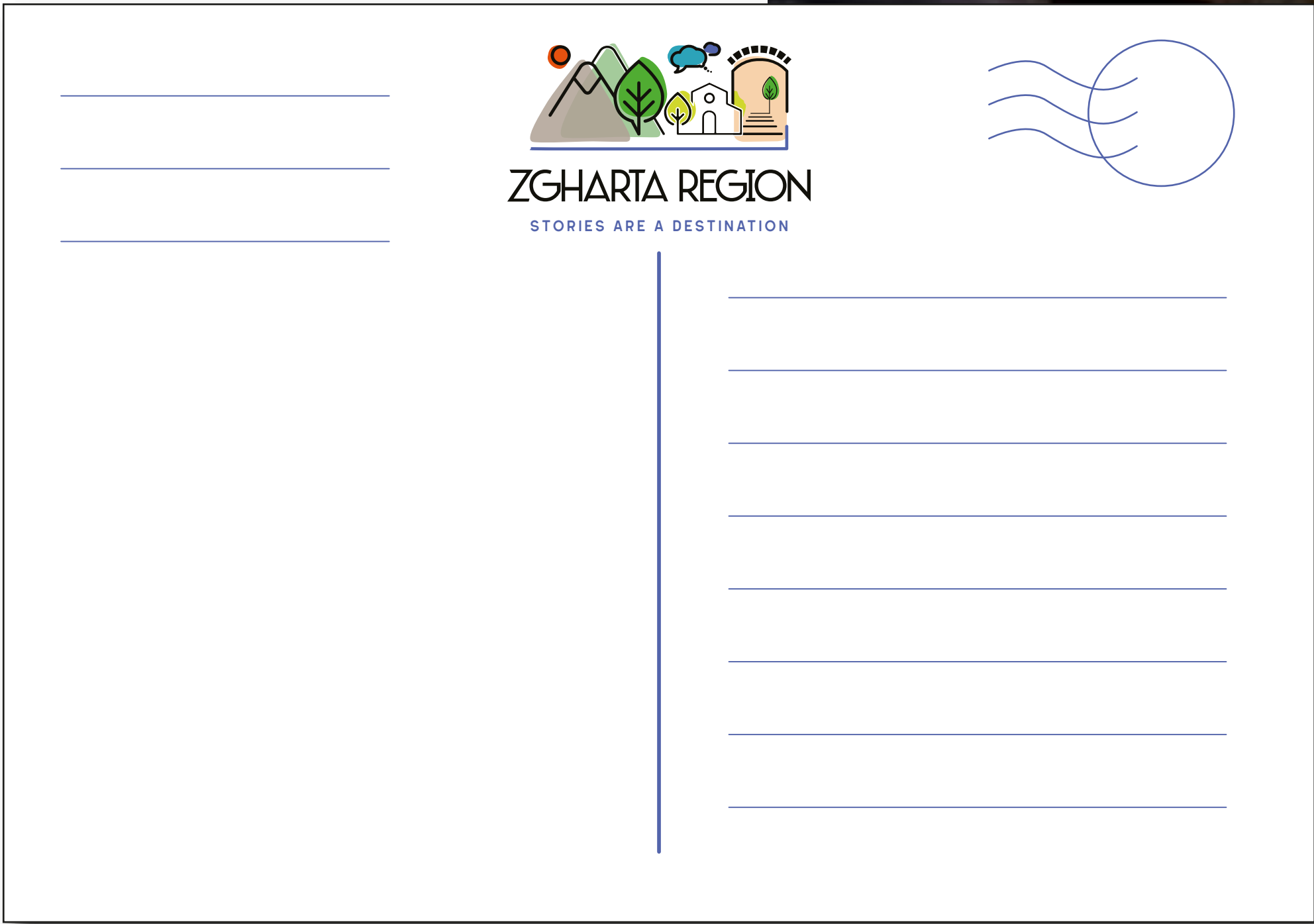


ROAD

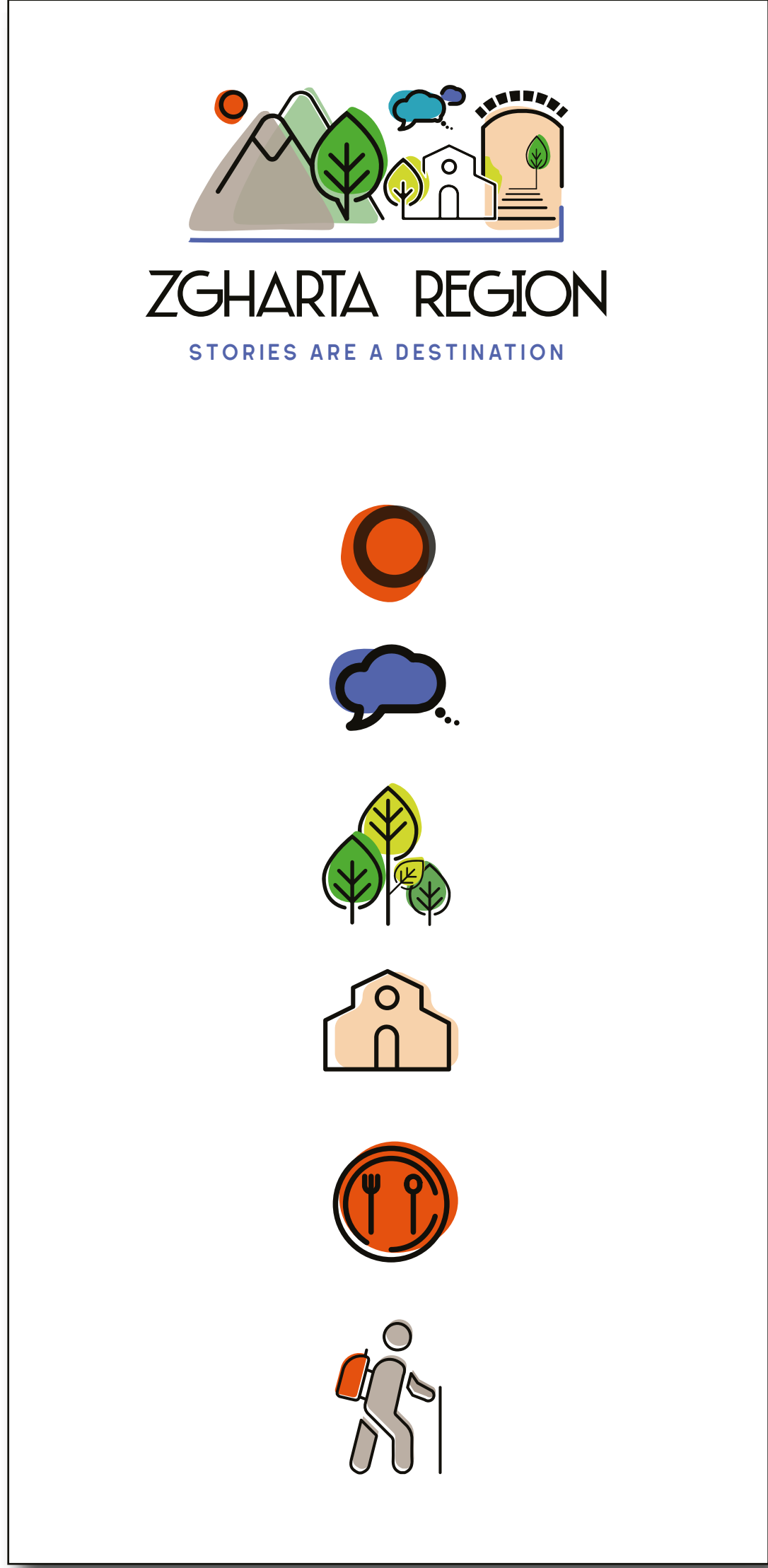


HIGHWAY

POSTCARDS



BROCHURE COVER



BROCHURE

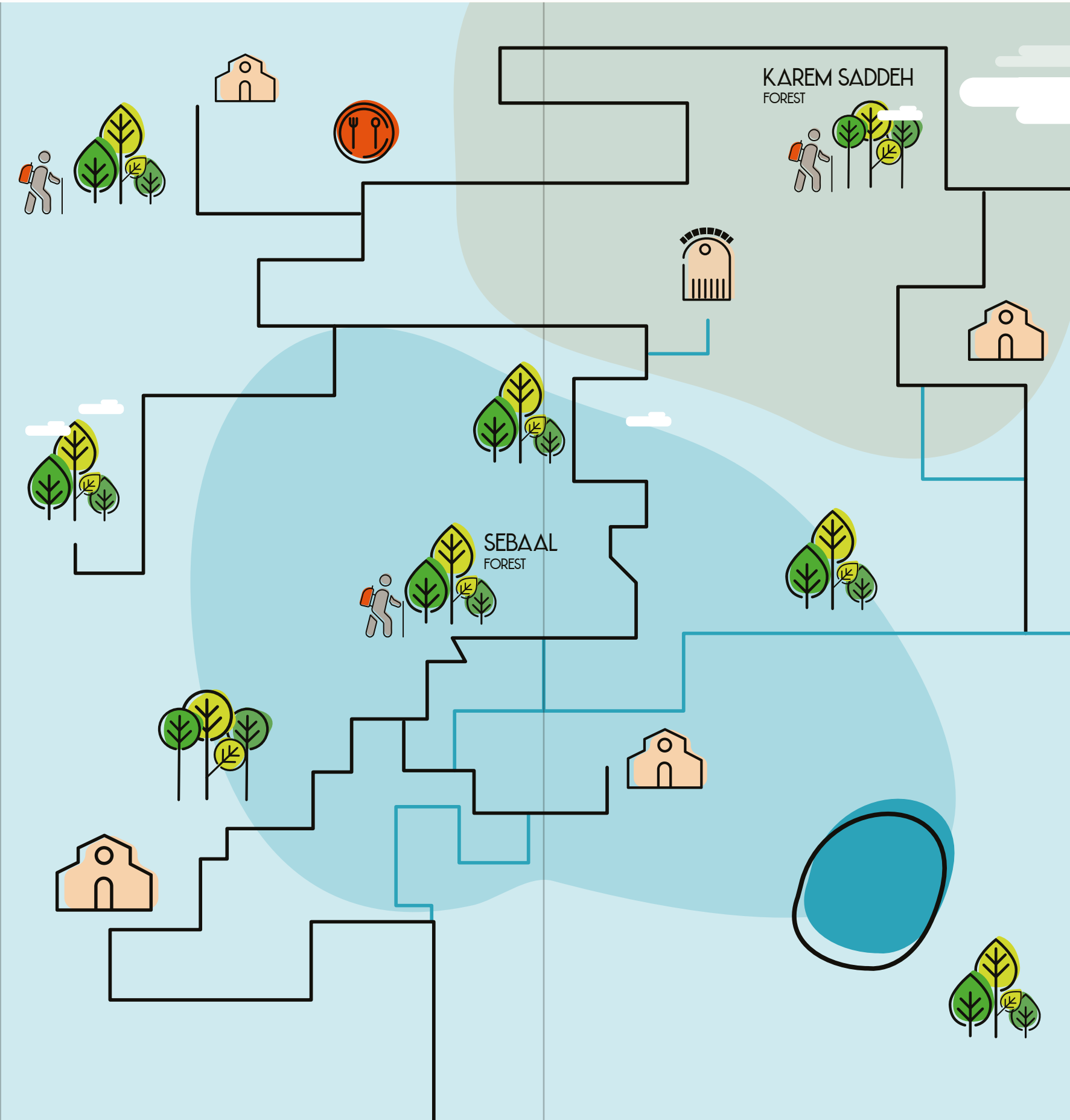
HISTORY

This town is 23 kilometers away from Ehden, 11 kilometers from the coastal city of Tripoli, 89 kilometers from Beirut- the capital of Lebanon, and 82 kilometers from Tartous, the nearest Syrian city. With no doubts, it is clearly witnessed that Zgharta's heritage, history, and local residents are highly associated with the village of Ehden.

The district of Zgharta - Zawiyé rests on the slopes of Lebanon's Western Mountains' chain, facing the Mediterranean Sea. The south western edge extends northward around the region of Tripoli and folds on the slopes of Kozhaya valley (classified world heritage by UNESCO). Zgharta's surface area is 2.6 million square meters.

Zgharta and Ehden residents are the same in both towns. They spend summer in Ehden, and the rest of seasons in Zgharta. Families have their own homes and properties in each town. This is in fact a unique phenomenon on both geographic and demographic levels.

Zgharta is the seat of Zgharta District. Zghartawis speak the Lebanese language with a distinctive accent; the original Syriac accent applied on Arabic language. Syriac was taught in local schools till the mid 1900s.





ZGHARTA - REGION
STORIES ARE A DESTINATION



EHDEN
KOBRA



14 MAY 2020



ZGHARTA - REGION
STORIES ARE A DESTINATION



اهدن
كبرى



١٤ ايار ٢٠٢٠



Thank You

Mar Mikhael, Achrafieh
Azirian Building, 1st Floor

t/f: + 961 | 567 764
e: info@bridgeofminds.com

BRIDGEOFMINDS.COM